

Magic Screen for P900/P910

What is Magic Screen?

Have you ever dreamt about a native screen saver that can work with the native locking mechanism and all of its advantages? About one that will give you a great choice of displaying options and only you decide what to use? A program that supports your own themes? A screen saver that integrates into the operating system and works like its part, a screen saver that saves power?

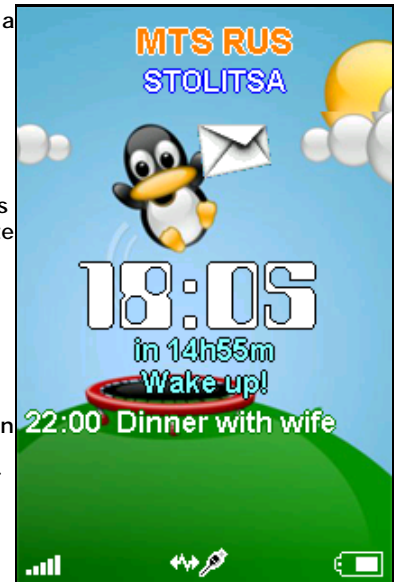
Now you got it.

Magic Screen is a native screen saver application for your Sony Ericsson smartphone that works as a part of the operating system and gives you many possibilities. You can use the program in FC and FO modes. It will replace the built-in screen saver and will essentially extend its capabilities.

Magic Screen works in the Screen Saver mode and provides a lot of useful information about your phone: current time/date, signal level (or flight mode), battery status, missed calls, unread messages (SMS/MMS/Email), next alarm, operator name, cell information, BlueTooth/InfraRed status, PC link status, silent mode, Calendar events, reminders, ToDo and lock status. When using audio/vibro notifiers, you'll never forget another missed call or an unread SMS. Magic Screen comes with a few themes both for FO and FC modes. Moreover, you can use our free theme editor to create your own themes!

Our application can work when you have locked your device. Unlike third programs, Magic Screen uses native UIQ locking/unlocking mechanism. So you do not need to lock your phone with a third party application (i.e. you can use a 3rd party locking application, but this is not obligatory), just use standard system lock! Magic Screen keeps your screen and keys locked preserving from accidental dialing or taps.

Magic Screen, unlike other products, is a screen saver that does not activate the screen backlight on accidental taps or keys pressing! This helps you to save battery life. Nevertheless you can use a special hotkey to turn on the backlight when needed! Finally, Magic Screen is the only screen saver that does not drain battery because it works as a part of the operating system, not as a usual application.



Features, supported by Magic Screen

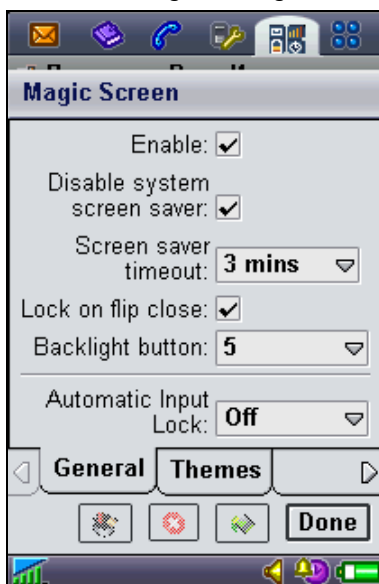
Magic Screen fully supports:

- digital clock;
- current date;
- signal level (or flight mode);
- battery level;
- missed calls (only if you have missed calls);
- inbox status (only if you have unread messages in inbox) including "SIM card full";
- next alarm;
- operator name;
- cell information;
- BlueTooth/InfraRed status;
- PC link status;
- silent mode;
- upcoming Calendar events, reminders and ToDo;
- lock status.

Also it allows you to use any picture as screensaver background!

General settings

To start working with Magic Screen, you must perform some settings.



General settings

Enable - activates Magic Screen. You must enable the program to work.

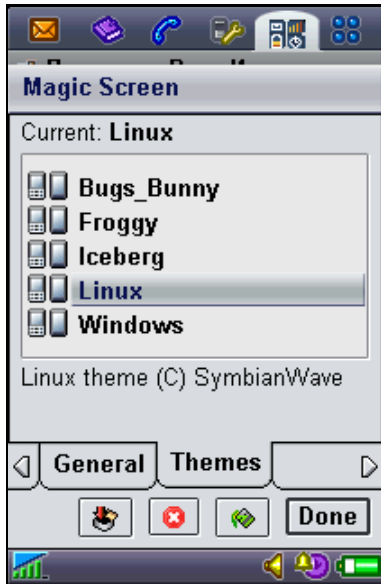
Disable system screen saver - we highly recommend you to disable system screen saver (if enabled) and fully replace it with Magic Screen. Otherwise the system screen saver will be activated (and consume power!) but you will not see it under Magic Screen.

Screen saver timeout - here you can set an interval of inactivity to automatically activate Magic Screen. Note that it is not necessary to lock your device to summon up the program!

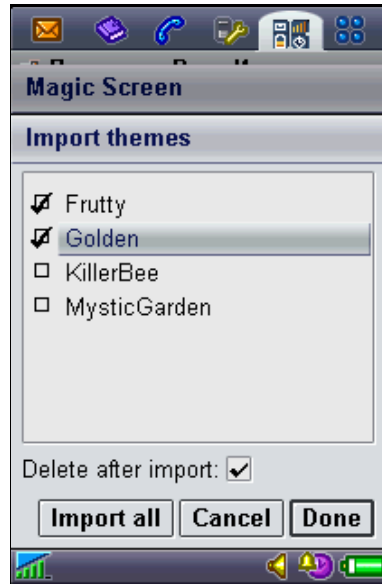
Lock on flip close - if you check this box, Magic Screen will lock your phone at once as you have closed the flip.
Backlight button - here you can set a button to turn on the backlight when your phone is locked. As was mentioned above, Magic Screen does not activate the backlight on accident taps or key presses. However, at night or when being in a cinema, you may want to check the phone (time or other information). Just press the backlight button (for example, [5]) and look at the screen!
Automatic input lock is equal to the same system function. When this setting is active, the screen and the Flip closed keypad will become automatically locked after a period of inactivity.

Themes

Magic Screen is a highly customizable application. It comes with a few ready themes, but you can create and use your own themes!





List of themes



Importing a theme

Here you can see a list of available themes. Each item has an icon showing a working mode of this theme (FO/FC). Usually themes support both modes, but this is not necessarily so.

Importing themes:

1. Download any Magic Screen theme from the Internet. Or you can create any theme by yourself using our Theme editor (see below).
2. Copy it (them) to your device. *Note:* when uploading (importing) the themes, be sure to store them in the Mail folders or in "C:\Documents\Media files\document" or "D:\Media files\document" folders!
3. Tap  button.
4. Magic Screen will scan folders and show a list of themes found.
5. Check the necessary themes and tap **Done**. You may use **Import all** button to import all found themes as well.
6. Now, in the themes' list, select the necessary theme and tap  button. That's all!

Alternatively, you can simply open a theme file using any file manager on your Sony Ericsson smartphone. You'll be able to import the file and install it as current theme.

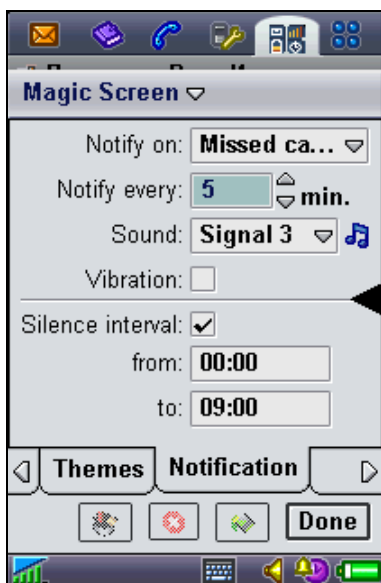
More themes

You can find more themes for Magic Screen on the Magic Screen Themes Collection page

<http://www.symbianwave.com/mstthemes.php>

Notification

Magic Screen can notify you about missed calls and unread messages. Now you don't need to unlock the phone to check what you could have missed.



Notification settings

Notify on - select the kind of event you'd like to be notified about: *None, Missed call, New message, Missed call + New message*. When you enable notification, the following options become available:

Notify every NN min - select a period to repeat notifications;

Sound - select an audio file (or *None* to disable audio alert). You can listen to it by tapping a note sign;

Vibration - check this option to use vibrating alert;

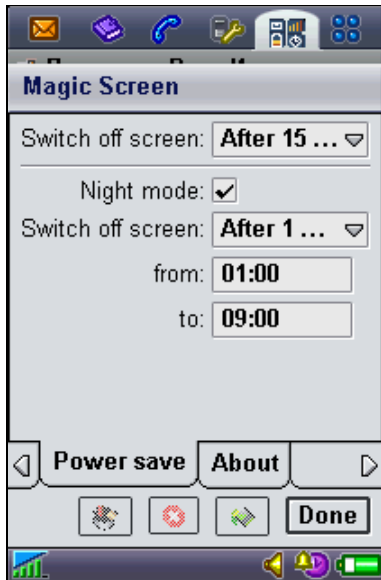
Silence interval - if you don't want to be awoken by the phone, define the hours when it should not disturb you.

If you use an audio file as alarm or notification signal, it will be played using the Multimedia volume setting. The ring volume setting will not effect the sound volume.

Saving power

If you have never used a screen saver, you'll probably notice an extra power consumption with Magic Screen. It is not a disadvantage of the program!

Magic Screen works as economically as it can ever be possible. According to our tests, Magic Screen requires almost half the power required by the standard UIQ screen saver. However the extra power will be consumed by the working display itself.



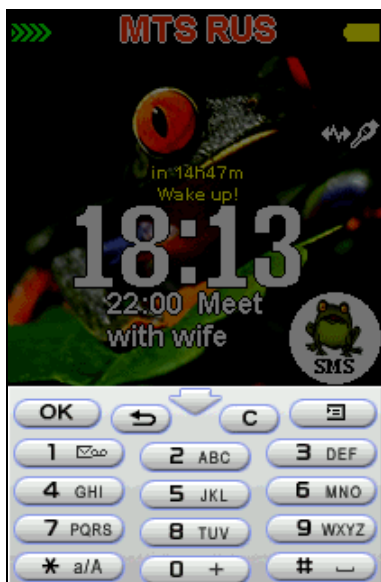
Power save settings

To save power, we recommend you to do the following:

1. Disable system screen saver (either in Magic Screen settings or in *Control Panel > Device > Display > Screen > Screen saver: None*). This is highly recommended in any case.
2. Enable power saving mode in Magic Screen. Open Power save settings. Here you can set an option to switch off the screen after the specified period of inactivity. In this case your screen will be turned off automatically according to the setting you made. You'll not see Magic Screen however; to call it press any key (it's fine to use *Backlight hotkey*. Note: This only works if the screen is locked, otherwise pressing any button sends Magic Screen to the background).
3. Use "Night mode" in Magic Screen. In the most cases you do not need a working screen at night. Enable "Night mode" and Magic Screen will turn off the screen in the evening and will turn it on again in the morning! Using night mode, you can save a lot more power.

Backlight control

Being a native screen saver application, Magic Screen does not activate the backlight on accident taps or key presses (when the phone is locked). However, at night or when being in a cinema, you may want to check the phone (time or other information). Backlight hotkey will solve this problem. Once defined, press the backlight button and look at the screen!



Backlight is off, the screen is dim.



Backlight is on and you can read the screen!

It's a really useful feature. We recommend you to use a key that is hard to be pressed accidentally, for example, numeric button [5].

Note for Virtual Flip users: you can use only "hardware" buttons as Backlight hotkey.

Locking your device

Your phone can be locked using one of the following ways:

- tap battery icon, then tap "Lock screen" button;
- automatic lock after a specified timeout (can be set in Control Panel or in Magic Screen);
- close the flip;
- press Menu key, then OK (in FC mode);
- use a third application that can lock the screen by hotkey (for example, our [Magic Launcher](#)).

Nevertheless, always remember that it is not necessary to lock your device to summon up Magic Screen.

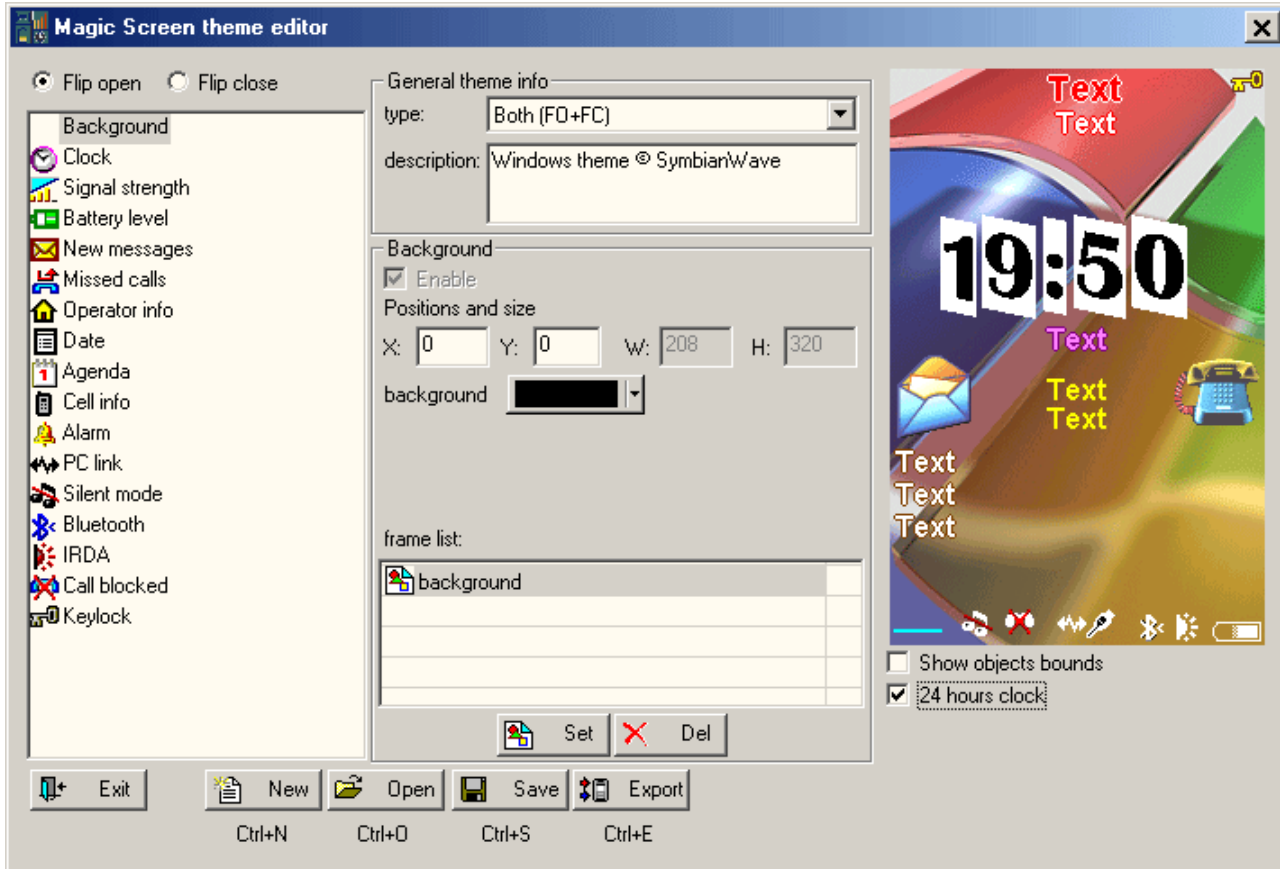
Unlocking your device

You have three standard methods to unlock the phone:

- push the Jog Dial Forward > Inward or Backward > Inward;
- press OK key, then *;
- open the flip (if closed).

Theme editor

We have developed a Windows program named Magic Screen Theme Editor. You can use the editor to create your own themes.



Magic Screen Theme Editor is free for non commercial use.

Download Magic Screen Theme Editor:

<http://www.symbianwave.com/product.php?id=mscreenuig>

Working with the editor is easy and intuitively. First you must prepare some pictures in BMP format. All of the bitmaps for any set (for example, Missed calls) must have the same height. All the frames for Battery and Signal sets must have the same size. If you want to create vertical Clock, be sure to keep the same width for frames with digits.

All of the bitmaps require a mask.

A bitmap mask for a BMP file is a standard BMP file where white (#FFFFFF) identifies 100% opacity and black 0% opacity (full transparent). All shades of grey between white and black identify different levels of opacity.

When everything is ready, make your theme by importing bitmaps and customizing fonts, colors, etc. You can save incompleated theme using Save button. When the theme is finished, export it to the Magic Screen format pressing Export.

Shareware restrictions

Magic Screen is a shareware program. Until registered, it is fully functional except for two restrictions:

- you have 15 days to try the program;
- sometimes, after unlocking, you'll see a nag screen.

To register Magic Screen, go to About tab and enter registration name and code. Registering the program will support its development.

Compatibility and installation. Uninstallation/updating

This program has been successfully tested on Sony Ericsson P900 and P910i smartphones. It is incompatible with other UIQ devices! Be sure to backup your smartphone before installing any program.

We always recommend installing the program on D: drive (Memory Stick card). In case you have any problems, remove Memory Stick card, boot up your phone, wait 2 minutes (this is important!), then insert the card, then uninstall Magic Screen.

To install or update (further versions) Magic Screen:

1. Disable Magic Screen.

2. Close Control Panel (if opened).
3. Install a new version.

To uninstall Magic Screen:

1. Disable Magic Screen.
2. Close Control Panel (if opened).
3. Uninstall the program as usual.

History

Version 1.0 (December 1, 2005). Initial release.

Download Magic Screen for P900/P910

<http://www.symbianwave.com/product.php?id=mscreenuig>