

# Magic Launcher for P800/P900/P910


## Why Magic Launcher?

Symbian UIQ is a nice graphical user interface, however we all feel the lack of a built-in task switcher and program launcher. Unlike other programs, Magic Launcher works as a part of OS making your work fast and comfortable. The program is tiny and uses negligible resources. You can now easily switch between running applications, start your favorite programs with one button, organize favorites, remap buttons and more!

Magic Launcher supports both FO and FC modes (with limited functionality in FC mode, of course).

In a few words, Magic Launcher = program launcher + task switcher + key remapper + favorites organizer + even more.

## Where is it and how to work? Main features of Magic Launcher

After installing Magic Launcher and rebooting the phone, you'll notice a small icon  appeared in applications' menu. This icon will be visible in all applications except "Phone" and Java based programs.

You can see Magic Launcher's main menu and applications' list below. Tapping an application instantly switches into it! To run a few steps forward, we have to mention this is not the only way to use the switcher!

Note that now you can use **Close** command to close any application!



*Tapping the new icon reveals Magic Launcher!*



*'Favorites' menu opened*

In the **Favorites**, you can store the most important actions of your phone such as quick access to SMS, Email, Task list, Call list, selected applications and do much more (see [Favorites](#) below).

In the **Start** menu, you can easily run any of your installed applications. Now you don't need to switch into Applications to do this job! All applications are divided into the usual groups, so it will be easy to find the necessary program.

In the **Documents** menu, you'll get a quick access to all recent documents. No need to search in disk folders to open a file that you access often!



*Starting your applications,  
now quick and handy*



*'Tools' menu*

In the **Tools** menu you can get an access to extended functions of Magic Launcher.

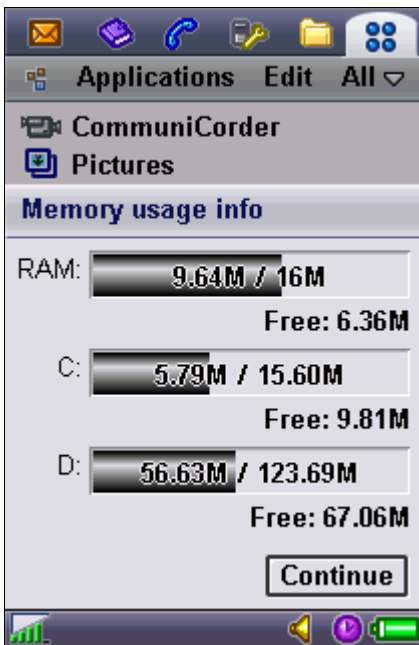
## Tools menu

**Memory info** shows RAM and disks usage.

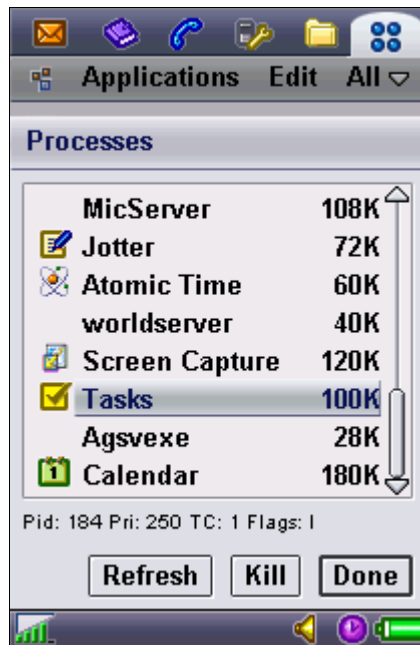
**Compact memory** defragments RAM and frees unused blocks of memory.

**Processes** shows system processes. You can kill any process (excluding some system processes). But be careful with this feature!

**Close all apps** closes all running applications. This is a nice feature when you want to free RAM quickly.



*Memory info screen*



*Processes screen*

**Hotkeys** - here you can set Jog-dial / buttons actions to have a quick access to many features of Magic Launcher and much more (see "Hotkeys" for details).

**Organize favorites** - you can set Favorites list for quick access to the most important functions (which usually cannot be reached fast).

**Preferences** - Magic Launcher options and other settings (see below).

**Arrange apps** - you can change an applications' order for the Start menu to have a quicker access to the most popular programs. Applications will be re-ordered in the system launcher too.

**Register** - please register Magic Launcher to support its development.

**About** - copyright information.

## My phone menu

Some useful functions can be found in **My phone** menu.



*My phone menu*

*Screen lock* - turns on screen locking function. This is a standard feature of P900/P910 phones (not available on P800);

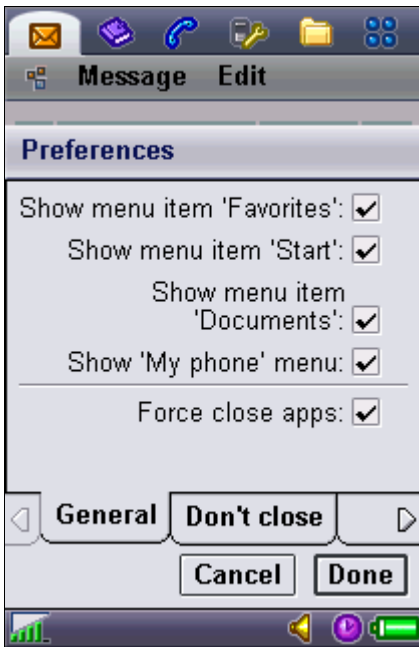
*Flight mode on/off* - turns on and off Flight mode;

*Power off* - use this option to switch the phone off;

*Reboot* - use this option to reboot the phone (not available on P800).

## Preferences

Here you can set some important options of Magic Launcher.



*Preferences - General*



*Preferences - Don't close*

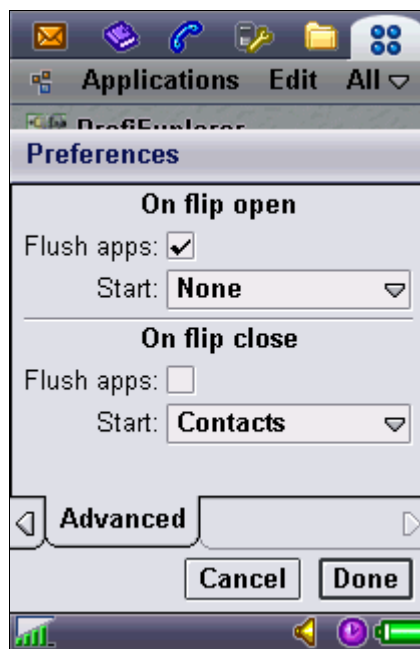
**General:**

- to save screen space, you may turn off showing *Favorites*, *Start*, *Documents* and *My phone* menus here;  
 - *Force close apps* - checking this option, you'll allow Magic Launcher to kill applications those cannot be closed by "Close all" command. This is safe.

**Don't close** - tick applications to exclude from "Close all" command. They won't be closed by Magic Launcher.



*Preferences - Exception list*



*Preferences - Advanced*

**Exception list** - in some cases, Magic Launcher can conflict with some programs. For example, it does not work with Booster applications. You can use this option to prevent Magic Launcher from appearing in these programs. However, you can always use hotkeys to call Magic Launcher menu!

**Advanced:**

*On flip open* - Magic Launcher can flush open applications (close them all) and run an application when you're opening the flip.

*On flip close* - Magic Launcher can flush open applications (close them all) and run an application when you're closing the flip.

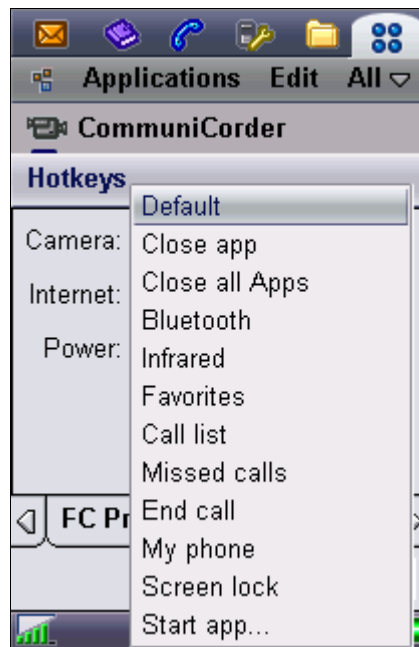
## Hotkeys (keys remapper)

Magic Launcher has a powerful keys remapping function (called **Hotkeys**). With the help of this function, controlling your device will be much easier.

To make the task management more effective, we recommend you to use hotkeys. You can assign various actions for Camera, Internet, Power buttons and Jog-dial away/towards presses.



*Hotkeys for FO mode*



*Hotkeys menu for FC mode*

### FO mode:

- **Default/None** - do not assign an action to the button (do not handle the button)
- **Task list** - pop-up a Task List (see below). This task list is very small and easy to use!
- **Close app** - close current application
- **Close all Apps** - close all running applications
- **Esc** - escape (equal to *Jog-dial away* on P900)
- **Menu** - call a program's menu (equal to *Jog-dial towards* on P900)
- **Bluetooth** - open Bluetooth settings menu
- **Infrared** - open Infrared settings menu
- **Favorites** - call Favorites list
- **Call list** - open call list
- **Missed calls** - open missed calls list
- **End call** - cancel call / hangup
- **Phone keypad** - open phone keypad
- **Magic Launcher** - open Magic Launcher menu (this can be opened in *any* application!)
- **My phone** - call My phone menu
- **Screen lock** - lock your phone (only for P900/P910)

- **Start app...** - select an application that you want to run with this button. You can assign any available application to this button

### **FC mode:**

- **Default** - do not assign an action to the button (do not handle the button)
- **Close app** - close current application
- **Close all Apps** - close all running applications
- **Bluetooth** - open Bluetooth settings menu (you can also have a quick access to communications menu pressing *Back* button)
- **Infrared** - open Infrared settings menu
- **Favorites** - call Favorites list
- **Call list** - open call list
- **Missed calls** - open missed calls list
- **End call** - cancel call / hangup
- **My phone** - call My phone menu
- **Screen lock** - lock your phone (only for P900/P910)
- **Start app...** - select an application that you want to run with this button. Note that you can select only applications those support FC mode

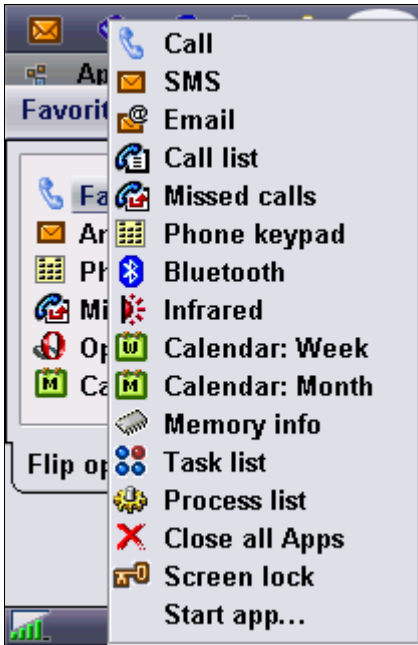
Every button may be *pressed* or *held*. Thus, you can set different actions for the both states.

Hint: you may assign *My phone* to the Power button to have more options of controlling the phone.

**Note for P900/P910 users:** please beware of assigning both Jog-dial towards/away actions in case of "Automatic input lock" is enabled. Otherwise you'll have to turn off/on the phone to unlock it.

### **Favorites**

**Favorites** is our special feature, which we highly recommend to use both in FO and FC modes. With Favorites, you will have ultra fast access to the most important functions (and programs) of your phone. Not only for applications, you can create fast links to SMS, Email, person calls and other (see the full list).



*Favorites for FO mode*



*Favorites for FC mode*

### FO mode:

- **Call** - select a person to make a phone call (you can select only persons who have a phone number)
- **SMS** - select a person to send SMS (you can select only persons who have a cellular phone number)
- **Email** - select a person to send Email (you can select only persons who have an Email address)
- **Call list** - open call list
- **Missed calls** - open missed calls list
- **Phone keypad** - open phone keypad
- **Bluetooth** - open Bluetooth menu
- **Infrared** - open Infrared settings menu
- **Calendar: Week** - open Calendar in Week view
- **Calendar: Month** - open Calendar in Month view
- **Memory info** - show RAM/disks information
- **Task list** - show Task list (running applications)
- **Process list** - show system processes
- **Close all Apps** - close all running applications
- **Screen lock** - lock your phone (only for P900/P910)
- **Start app...** - choose an application to run (you can choose any application)

### FC mode:

- **Call** - select a person to make a phone call (you can select only persons who have a phone number)
- **SMS** - select a person to send SMS (you can select only persons who have a cellular phone number)
- **Call list** - open call list
- **Missed calls** - open missed calls list
- **Bluetooth** - open Bluetooth menu
- **Infrared** - open Infrared settings menu

- **Close all Apps** - close all running applications
- **Screen lock** - lock your phone (only for P900/P910)
- **Start app...** - choose an application to run (you can choose only applications those support FC mode)

## Task List and Favorites List

Once you assigned a **Task List** action and/or **Favorites** action to any button, you can call them from any application. Very fast, very useful!



*Task List: quick and easy to use!*



*Favorites List: everything in one place!*

Use Jog-dial or stylus to select an application (favorite) from the list. To hide the task list / favorites without switching, use the same hotkey or escape action.



*Favorites in FC mode*

You can also use Favorites in Flip Closed mode! Just set only applications those you want to be shown in FC mode, add some important functions as Call, SMS - and use Magic Launcher for quick access to the most frequent features of your phone! (Don't forget to assign a hotkey to call Favorites in FC mode). You may use keypad buttons (1...0, #, \*) for faster access.

## Compatibility and installation. Uninstallation/updating

This program has been successfully tested on Sony Ericsson P800, P900 and P910i smartphones. We cannot guarantee its work on other devices. Be sure to backup your smartphone before installing any program.

Hotkeys feature may be incompatible with other key remapping software.

We always recommend to install the program on D: drive (Memory Stick card). In case you have any problems, remove Memory Stick card, boot up your phone, wait 2 minutes (this is important!), then insert the card, then uninstall Magic Launcher.

**To install or update (further versions) Magic Launcher:**

1. Install a new version.
2. Reboot the phone.

**To uninstall Magic Launcher:**

1. Uninstall the program as usual.
2. Reboot the phone.

**Download**

Download the latest version of Magic Launcher for P800/P900/P910 from our site  
<http://www.symbianwave.com/product.php?id=mluiq>