

Magic Profiles Pro for P800/P900/P910

More than just profiles on your Sony Ericsson smartphone!

Magic Profiles Pro is the best utility for Sony Ericsson P800/P900/P910 devices that allows you to manage various phone profiles, to enable a full call management, to set profiles according to your location in GSM network and much more as system sounds and Bluetooth control.

Using Magic Profiles Pro, you will never experience any problems enabling, for example, a silent mode for night time or meetings, a loud mode for an outside or car driving, and much more, any imaginable alert settings. You can bind these profiles not only to 24-hours' grid, but for workdays and holidays, defining rules and exceptions. Your smartphone will automatically switch between the profiles offering a comfortable work with the device.

Our handy call manager will give you the full power of controlling incoming calls. You can create white and black lists with any corresponding actions, from rejecting a call to forwarding, sending SMS and more.

With various profiles, you can control the most of phone features in just one touching of your smartphone's screen. Change rings, sounds, messages, vibrations, sound volume of ring and talking, at one moment! Using this application you can create any number of profiles and switch between them instantly - in the same way as on an ordinary mobile phone.

Magic Profiles Pro understands your Calendar's appointments and follows them. Now and forever you can forget all about these manipulations with ring volume, melodies, vibrating alerts, etc.

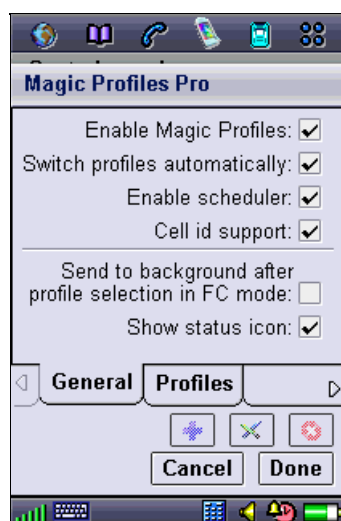
At last but not at least, Magic Profiles Pro can determine your location within a GSM network (using cell ids). You will never make a mistake enabling profiles being at work or at home, because Magic Profiles Pro always knows where you are.

A note for the registered Magic Profiles users: please [read upgrade information](#).

Working with Magic Profiles Pro

To open Magic Profiles Pro, **tap its icon in the Applications list**. Alternatively, go to **Control Panel > General > Magic Profiles Pro**. Now let's go through all the tabs to learn this application.

General



'General' tab

It's the main screen with general settings. Here you can:

- Enable the program itself. When enabled, Magic Profiles Pro replaces a standard sound dialog and allows you to switch between profiles in one tap. The program must be enabled to work.
- Enable automatic profiles' switcher. When disabled, you can work with Magic Profiles Pro in manual mode.
- Enable the scheduler. When this feature is turned on, Magic Profiles Pro automatically switches between profiles according to the scheduler rules that you've set. It is the most important (basic) feature of Magic Profiles Pro therefore, in general case, we advise you to turn the scheduler on.
- Enable cell id support. You can bind profiles to your location within a GSM network. So you'll be able to create various profiles for your home, work, favorite pub and so on.





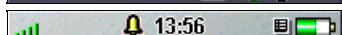
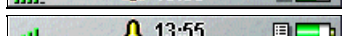
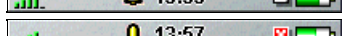


Another settings include:

- Send to background after profile selection in FC mode. This may be useful if you prefer to return to default screen when working with Magic Profiles Pro in Flip Closed mode.
- Show status icon. Status icon can show you the current state: white list, black list, rejecting all calls, automatic switching enabled (see below for details).

Status icon

Magic Profiles Pro can show a status icon both in FO and FC modes:

-  - FO: black list mode (do not accept calls from the black list);
-  - FO: white list mode (accept calls only from the white list);
-  - FO: reject all calls;
-  - FO: (green clock) - automatic profile switching enabled;
-  - FC: black list mode (do not accept calls from the black list);
-  - FC: white list mode (accept calls only from the white list);
-  - FC: reject all calls.

Profiles

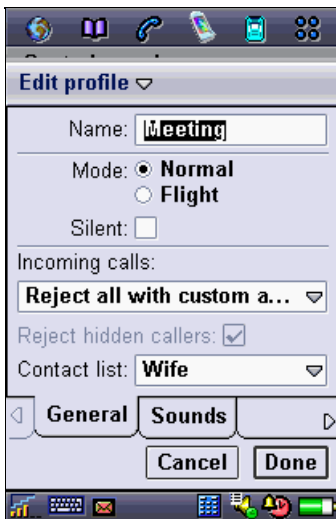


'Profiles' tab

Here you can view, create, edit and delete profiles. You can have as many profiles as you wish.

To create a new profile, tap the button with the plus sign, then enter a desired name for this profile.

To sort profiles, use "arrow up" and "arrow down" buttons. To edit a profile, use the pencil button. To delete a profile, tap the cross sign.



Profiles: 'General' tab

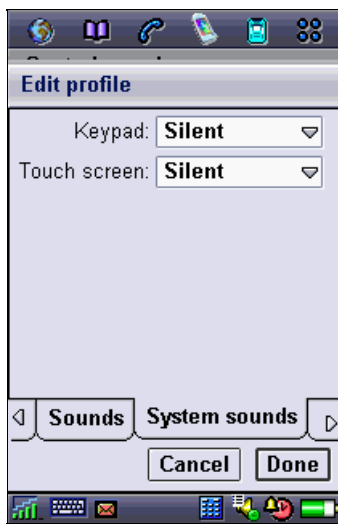


Profiles: 'Sounds' tab

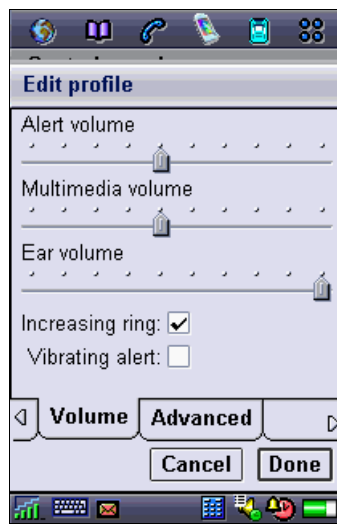
In the **General** tab you can choose:

- a working mode for the profile. Silent mode means that all sounds will be disabled, and the Flight mode means disabling all the phone functions.
- incoming calls choice:
 - *Accept all calls* - all calls will be accepted. You can check "Reject hidden calls" box to made an exclusion for unknown callers.
 - *Reject all calls* - all incoming calls will be rejected.
 - *Reject all with custom action* - you can set a default action (Send busy tone, Reply by SMS, Divert calls) later in "Advanced" tab. You can also set a contact group to use for this profile/action. Note that Magic Profiles Pro supports groups from Contacts application and its own groups as well!
 - *Black list* - do not accept calls from the Black list. You should also select a contacts group to consider them as black list callers. "Reject hidden calls" box works as usual.
 - *White list* - accept calls from the White list only. You should also select a contacts group to consider them as white list callers. "Reject hidden calls" box works as usual.

In the **Sounds** tab you can specify any sound for every incoming event. (Note: P900 has an additional option titled "Ring (voice) Line 2").



Profiles: 'System sounds' tab

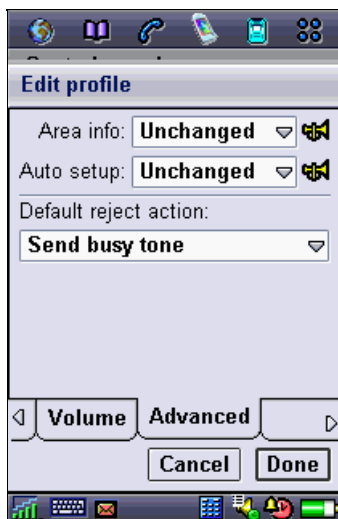


Profiles: 'Volume' tab

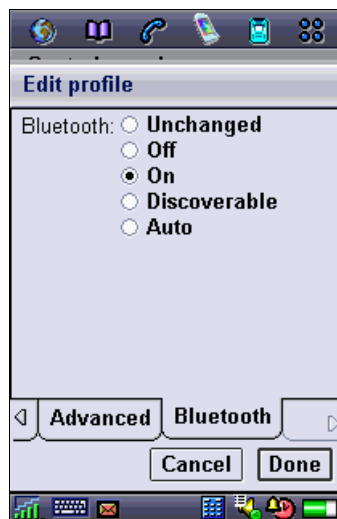
In the **System sounds** tab, you can set these sounds:

- Keypad: *Unchanged, Tone beep, Click, Silent*
- Touch screen: *Unchanged, Click, Silent*

In the **Volume**, you can change a sound volume, turn an increasing ring on/off, switch a vibrating alert on and off.



Profiles: 'Advanced' tab



Profiles: 'Bluetooth' tab

In the **Advanced**, you can:

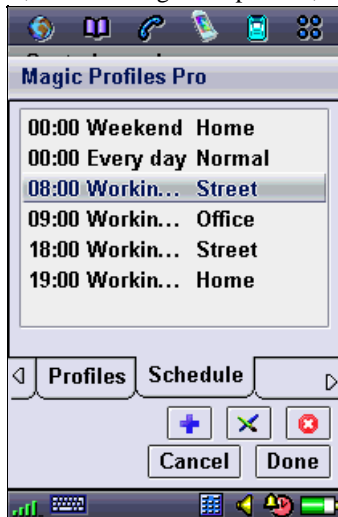
- change some other setting as melodies for area info, auto setup and default alarm sound (last option is for P900 only).
- set default reject option (see *General - Incoming calls* option above):

- *Send busy tone* - hang-ups the phone and sends busy signal to the caller. This can be useful if you do not wish to speak with anyone.
- *Reply by SMS* - hang-ups the phone and sends SMS to the caller. You'll need to enter a SMS text. This option can be used, for example, to inform your callers that you are busy at this moment.
- *Divert calls* - diverts incoming calls to another phone (you'll need to enter the phone number). Extremely useful feature that lets you stay online in any place!

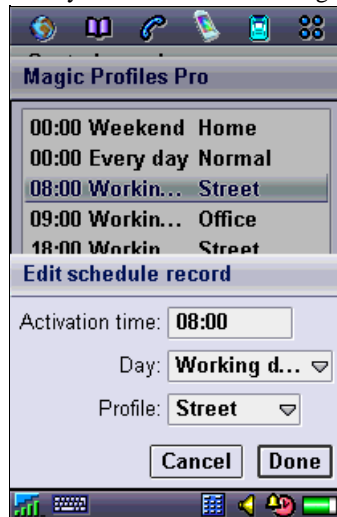
In the **Bluetooth** tab, you can control your Bluetooth settings.

Schedule

Now, after creating some profiles, it's high time you bind them to working hours (or days).



Schedule tab



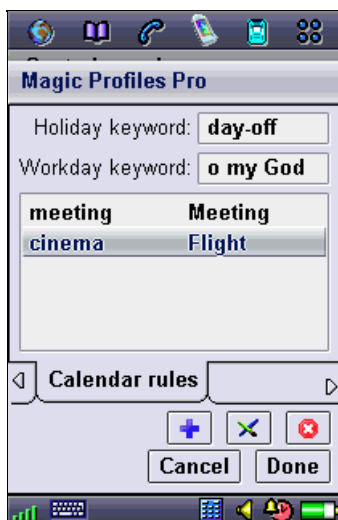
Editing a time rule

Here again you can view, create, edit and delete schedule rules. When the scheduler is enabled, Magic Profiles Pro automatically switches between profiles following these rules. Note that every rule has an *activation time* only. This means that current profile will work until next one is activated (manually or automatically).

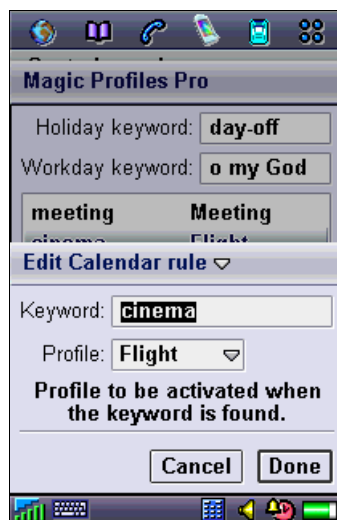
You may create as many schedule rules as you wish, and make any settings! There can be a rule for every day, for any day of week, etc.

Calendar

Not only to time settings, you can bind profiles to Calendar's entries!



Calendar tab



Editing a calendar rule

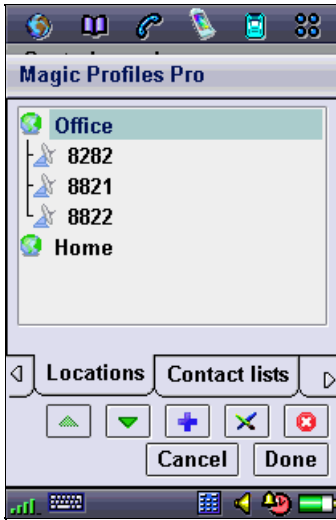
- Enter a "Holiday" word. When Magic Profiles Pro finds this word in your Calendar entry, it always considers this day as a holiday. This will help you to create exceptions for other rules (extra holidays, vacations, calendar changes, etc). *Note: you should create an "All day event" Calendar entry!* You may also use "Location" field.

- Enter a "Workday" word. When Magic Profiles Pro finds this word in your Calendar entry, it always considers this day as a working day. This will help you to create exceptions for other rules (extra working days, calendar changes, etc). *Note: you should create an "All day event" Calendar entry!* You may also use "Location" field.

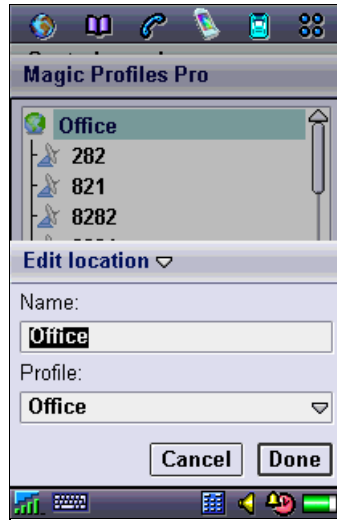
Create some rules which will work with special keywords. You should use these keywords in your Calendar when you want to tell Magic Profiles Pro if you are on a meeting etc. For example, create here a necessary rule for *meeting* word. Then, enter this word (exactly) in one of your Calendar entries. When Magic Profiles Pro finds this word, your phone will be automatically switched to the according profile. You may also use "Location" field.

Locations

Magic Profiles Pro can use GSM cell ids to recognize your location within a network. Here you can edit various locations and bind your profiles to them.



Locations tab



Editing a location

This feature can be very useful if you like to bind profiles to your location. For example, create a profile "Office", associate it with cells (every location can have several cells) - that's all! Now you don't have to think about other rules (scheduler, calendar) when you are at office. Whenever you leave the office the scheduled profile will get activated and whenever you get back to the office, the office profile will get activated!

You can work with locations (globe icon) as usual: sort, add, edit, delete. Cells (antenna icon) may be deleted only.

Contact lists

Here you can create your own groups of contacts for "Black list" / "White list" / "Reject with custom action" modes. Magic Profiles Pro uses standard Contacts database, but can handle its own groups with custom settings.



Contact lists tab

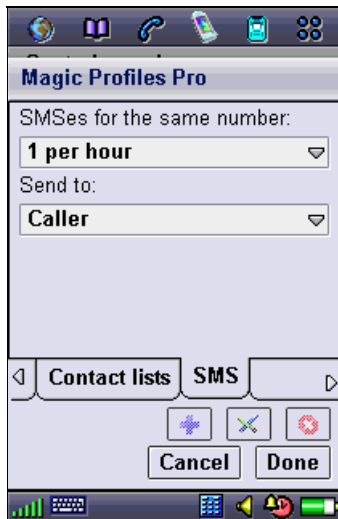


Editing a Contact list

Note that you can place one contact in any number of groups. Every contact can have its own *Reject action* and its own *SMS text*.

SMS

Here you can set some options related to SMS.



SMS tab

When a profile's default reject action is set to "Reply by SMS", you may want to limit SMS number to save money (1...2 per day, 1...4 per hour, Unlimited).

You can also set a "Send to" option:

- *Caller* - sends SMS directly to the caller
- *Cell phone only* - sends SMS only to a cell phone
- *Caller's cell phone (if defined)* - looks for the caller's cell number in the phonebook and sends SMS to this number if found

Profile priorities

You must know about priorities to customize your profiles correctly. Here are the main priorities:

1. **Calendar** (the highest priority).
2. **Locations**.
3. **Scheduler** (the lowest priority).

Scheduler rules have their own priorities: first **weekday** rules, then **workday/weekend** rules follow, and then **every day** rules at last. For example, you made such settings:

- **Calendar rule** with the keyword ***meeting*** -> profile **Meeting**;

- **Scheduler rules**:

-- **09:00 / Monday** -> profile **Profile1**

-- **09:00 / Workday** -> profile **Profile2**

-- **09:00 / Weekend** -> profile **Profile3**

Then if you have a Calendar entry "Monday, 09:00-09:30, *meeting*", the **Meeting** profile will be set on this day, at this time (9:00). At 9:30, the **Profile1** will be activated. On Tuesday-Friday, the **Profile2** will work. And on Saturday-Sunday, the **Profile3** will finish the week.

Quick access to all profiles / Magic Profiles Pro' preferences

To have quick access to all of your profiles from any application, simply tap the sound icon on your statusbar.



Quick access to profiles



Working with location

You'll get our advanced dialog where you can choose any profile and perform some minor settings such as volume control and automatic

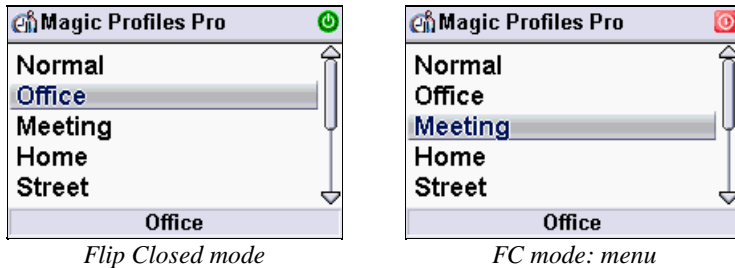
switching enabling. However, keep in mind that if you like to keep a manually chosen profile, then the scheduler must be disabled (otherwise it will automatically switch between profiles as usual).

Also you can see your current location (lower box titled "Office" on the left screenshot above). Tapping this box will call a corresponding menu allowing to work with a current cell.

At last, now you have an easy access to all Magic Profiles Pro' preferences - just tap the "Prefs" button.

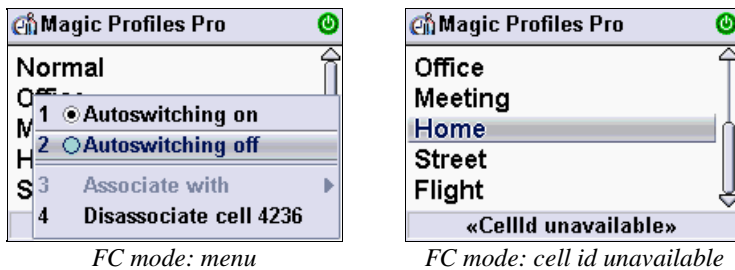
Flip-Closed mode

You can work with Magic Profiles Pro in FC mode. Run Magic Profiles Pro as usual.



Left screen: profile "Office" selected, autoswitching is on (green icon), cell id support is on (location bar visible), current location is "Office".
Right screen: profile "Meeting" selected, autoswitching is off (red icon), cell id support is on (location bar visible), current location is "Office".

When you choose a profile (manually), you'll get a message "Profile XXX activated". Note that the scheduler will be disabled (automatically), otherwise it could override this manual profile selection.



Left screen: FC menu. Here you can control autoswitching and work with cell support. Cell id is always linked with a location, therefore you can: either disassociate linked cell ("4236" here) or associate unlinked cell with a location.

Right screen: cell id unavailable (cannot be determined by the program).

You may press "C" button to access the scheduler's menu.

Default profile

It is always recommended to create a so-called **Default profile**. This profile will be activated if there are no other rules active at this moment. A very useful feature!

To use a Default profile, create a new rule in the scheduler:

00:00 Everyday -> Normal

("Normal" is a name of the profile you want to use by default). Thus, this rule will have the lowest priority. It will only work if there are no other rules active at this time. Note that everyday, at 0:00, your profile will be changed to the Default one.

Compatibility and installation. Uninstallation/updating

This program has been successfully tested on SonyEricsson P800 and P900 smartphones. We cannot guarantee its work on other devices. Be sure to backup your smartphone before installing any program.

We always recommend to install the program on D: drive (Memory Stick card). In case you have any problems, remove Memory Stick card, boot up your phone, wait 2 minutes (this is important!), then insert the card, then uninstall Magic Profiles Pro.

To update Magic Profiles Pro:

1. Disable the program (in its main menu).
2. Close Control Panel (with any task manager).
3. Update Magic Profiles Pro by installing a new version.

To uninstall Magic Profiles Pro:

1. Disable the program (in its main menu).
2. Uninstall the program as usual.

Upgrading

Our customers who have registered Magic Profiles Lite until September 20, 2004, can upgrade their Magic Profiles to the Pro version. This upgrade costs \$5 only. Please follow http://www.symbianwave.com/upgrade/upgrade_mpuiq.php to upgrade your version of Magic Profiles.

Download

Download the latest version of Magic Profiles Pro for P800/P900/P910 from our site

<http://www.symbianwave.com/product.php?id=mpprouiq>